

MORGELLONS

IS A PHYSICAL ILLNESS

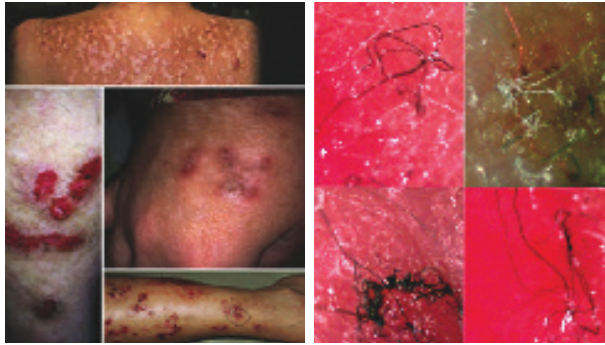
Morgellons is a multi-system disease with an infectious cause, *Borrelia*, spirochetal bacteria which are also found in Lyme disease. The distinguishing characteristic of Morgellons disease is the presence of microscopic fibers within the skin. With the use of lighted, handheld microscopes (60-100x) these unusual, often colored fibers can be found beneath completely intact skin and embedded in open skin lesions.

IT CAN AFFECT ANYONE

Morgellons affects people of all ages, genders and ethnic groups. Adults and children, as well as animals, have been reported with symptoms.

THESE ARE THE SYMPTOMS

- Intense itching, stinging or biting feelings
- Crawling sensations under the skin
- Skin lesions which may take years to heal
- Black specks in or on the skin
- Fine, thread-like fibers beneath or emerging from the skin
- Fatigue impacting activities-of-daily living
- Neurological impairment and diminished cognitive abilities
- Gastrointestinal changes
- Muscle aches, joint pain
- Sleep disturbances
- New onset of anxiety or panic
- Cognitive disturbances, “brain fog”
- Visual Changes



*Scarring, lesions, and skin pigment changes seen in female with Morgellons for 10+ years.
Fibers viewed at 60-100x within skin of same patient*

IT CAN BE DIAGNOSED

A clinical diagnosis includes:

- An overall physical exam
- Viewing of fibers in the skin at 60-100x magnification
- Evaluation of symptoms

Presently there are no specific tests for Morgellons. Lab tests for *Borrelia burgdorferi* (Bb) called Lyme tests are blood tests to detect Bb antigen/ antibodies, but are presently unreliable.

NOT A DELUSIONAL CONDITION

There is a real need for the medical community to understand Morgellons. Patients are often misdiagnosed with Delusions of Parasitosis (DOP). Insufficient lab tests can mistakenly identify Morgellons fibers as textile contamination, misleading physicians to conclude their patients have caused these physical symptoms. The DOP diagnosis should never be rendered until a thorough examination has been given and all other causes ruled out.

IT CAN BE TREATED

Studies show 97% of Morgellons patients have evidence of existing Lyme disease. Lyme specialists take Morgellons seriously offering care according to clinical findings. For assistance in locating a specialist:
www.LymeDiseaseAssociation.org
www.ilads.org



*Dr. Randy E. Wymore
and Carol Saylor-Hefley
at the OSH-CHS Center
for the Investigation of
Morgellons Disease*

RESEARCH FOR A CURE

Since 2005, medical research has been conducted at Oklahoma State University at Tulsa under the direction of Dr. Randy S.Wymore, PhD. Marianne Middelveen, a Canadian veterinary microbiologist discovered similarities between Morgellons disease and BDD, a cattle disease caused by a spirochetal infection. In 2011 The Holman Foundation supplied funding for research to Ms. Middelveen and Raphael Stricker, MD, a pioneer in Morgellons disease. This effort led to the detection and isolation of *Borrelia burgdorferi*, and other closely related *Borrelia* species in skin specimens from Morgellons patients. Studies continue to produce promising results, and demonstrate a physiological basis for this disease. This peer-reviewed research is available on our website.

Every spring the Holman Foundation sponsors The Medical Scientific Conference on Morgellons Disease in Austin, TX to provide research scientists throughout the world a venue in which to share their work on Morgellons Disease. Medical professionals and patients attending the conference engage directly with the researchers to exchange the latest information.

Currently, there exists neither federal grants nor private funding sources to support research for this disease. Your gifts play a vital role as private donations are our total means of support.

For more information please visit us at
www.MorgellonsDisease.org

Yes, I would like to support this research with my tax-deductible contribution.

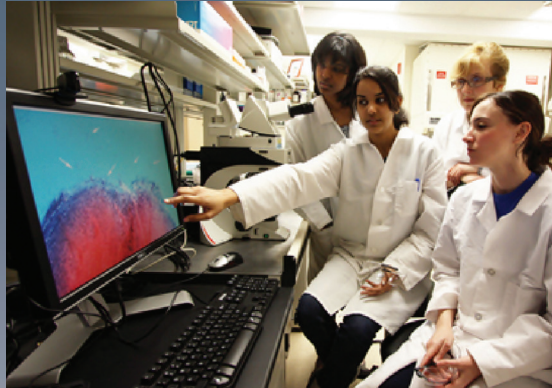
NAME

ADDRESS

CITY STATE ZIP

EMAIL

Please mail checks to
The Charles E. Holman Morgellons
Disease Foundation
P.O. Box 1109
Lone Star, TX 75668



Dr. Eva Sapi leads the Morgellons research at the University of New Haven

The Charles E. Holman Morgellons Disease Foundation is the singularly recognized authority on Morgellons and stands alone in funding scientific research of this condition. Our foundation acts as advocate and proponent for scientific research, education, patient outreach, diagnosis and treatment of Morgellons Disease.

For more information including:
Published Research
Current Testing
Annual Medical-Scientific Conference
Audio Programs • Images
Helpful Suggestions
Please visit us at
www.MorgellonsDisease.org



The Charles E. Holman Morgellons Disease Foundation
Copyright 2018 All Rights Reserved

UNDERSTANDING MORGELLONS DISEASE

